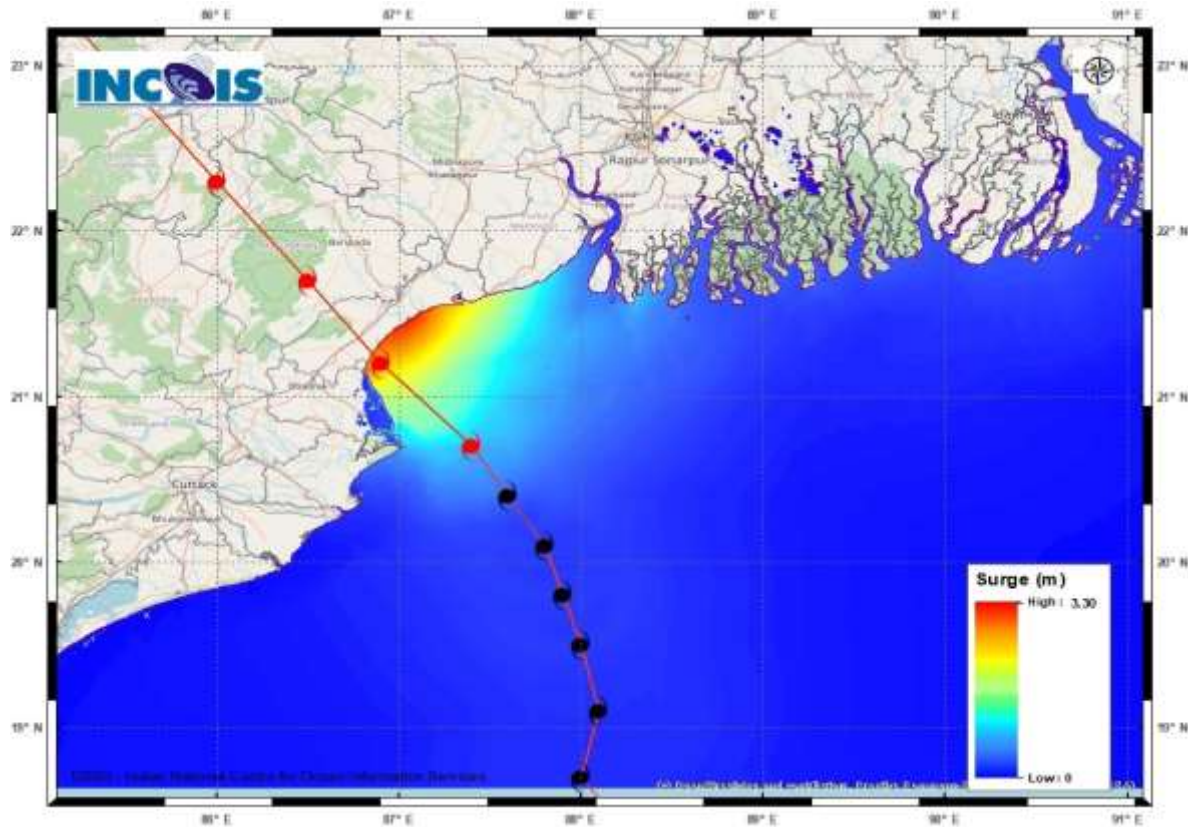


## **STORM SURGE GUIDANCE BASED ON 0000 UTC OF 26th MAY**

Tidal waves of height 2-3 meters above astronomical tide are likely to inundate low lying areas of Balasore, Bhadrak and about 2 meters above astronomical tide are likely to inundate low lying areas of Medinipur, South 24 Parganas, Kendrapara & Jagatsinghpur Districts around the time of landfall.



Storm Surge Bulletin from INCOIS

MANDAL/TALUK	DISTRICT	STATE / UNION TERRITORY	NEAREST PLACE OF HABITATION	STORM SURGE (m) *	EXPECTED INUNDATION EXTENT (km)
Baleshwar	Baleshwar	Odisha	Kumbhigari	1.2-3.3	Upto 2.00
Bhadrak	Bhadrak	Odisha	Mohanpur	1.0-2.9	Upto 7.50
Kendraparha	Kendrapara	Odisha	Tikayat Nagar	0.5-1.4	Upto 2.64
Kanthi	Purba Medinipur	West Bengal	Safar Chata	0.5-2.0	Upto 1.32
Basirhat	North 24 Parganas	West Bengal	Amlamethi	0.5-0.7	Upto 0.26
Diamond Harbour	South 24 Parganas	West Bengal	Chakloknath	0.5-0.6	Upto 0.78
Tamluk	Purba Medinipur	West Bengal	Jamitta	0.5-0.6	Upto 0.35